

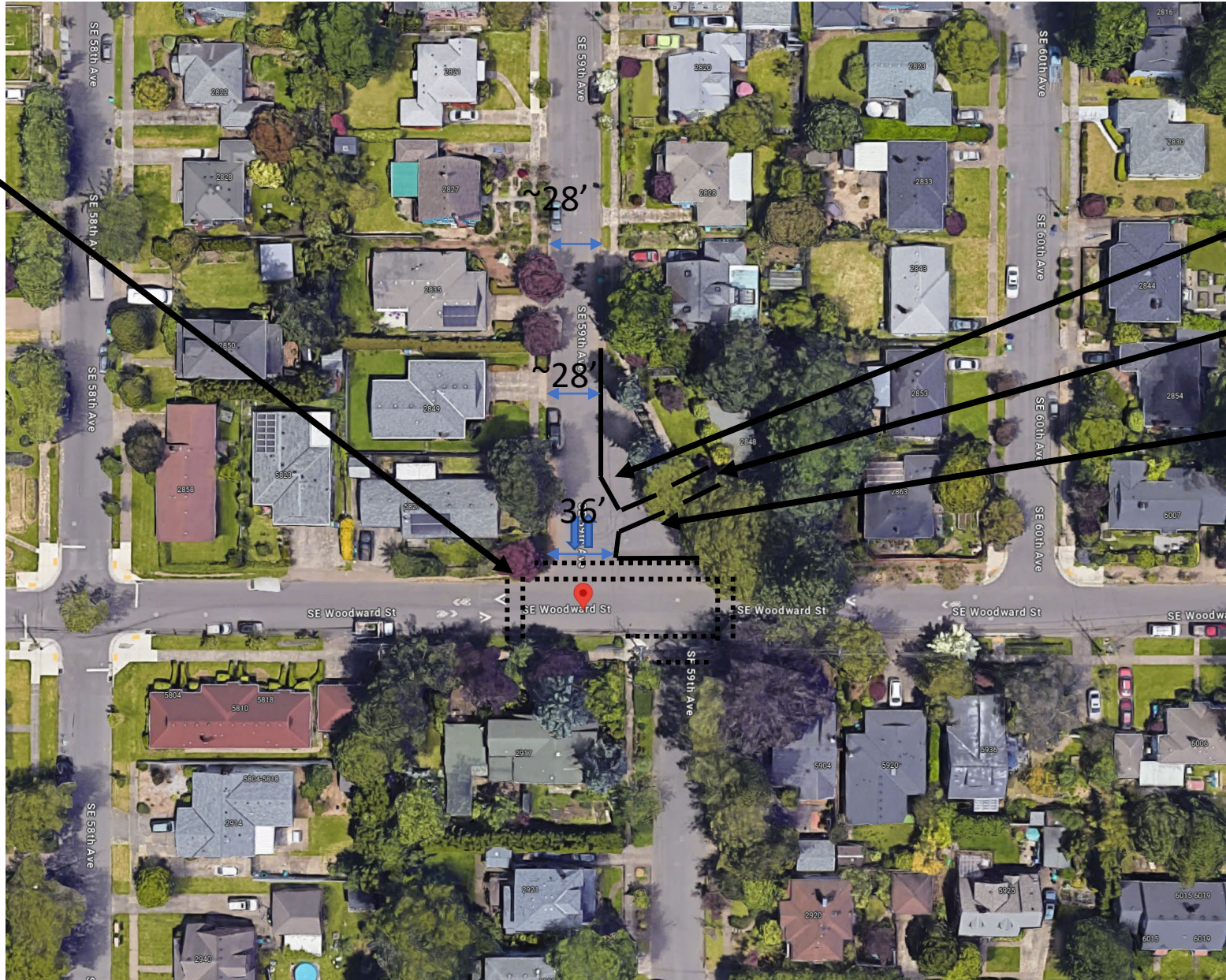
SE 59th & SE Woodward Intersection Improvement

- Safe route to school and neighborhood greenway .
- Key pedestrian and bicycling routes.
- Historic design makes walking and bicycling across less comfortable and can encourage faster speeds.
- The road design allows people to drive dangerously (doing donuts).
- Full intersection re-build is too expensive.
- Three potential options follow .



Option 1

Unimproved Sidewalk w/
curb cut



12" Traffic
Separators

Align with
Driveway

12" Traffic
Separators

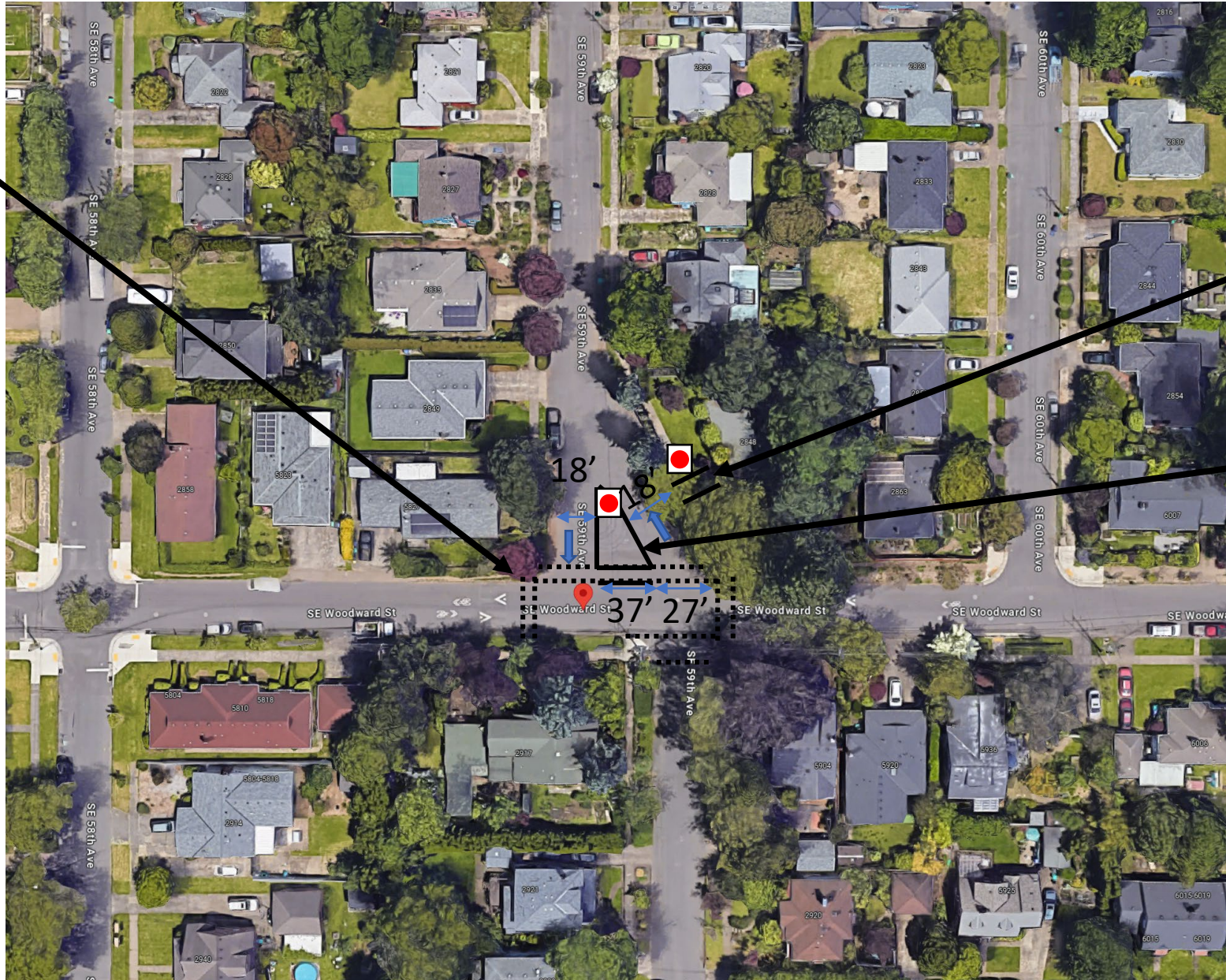
↔ Path of Travel = Veh

⋯ Path of Travel = Ped



Option 2

Unimproved Sidewalk w/
curb cut



● Do Not Enter Signs

Space island away from with driveway to allow ingress/egress

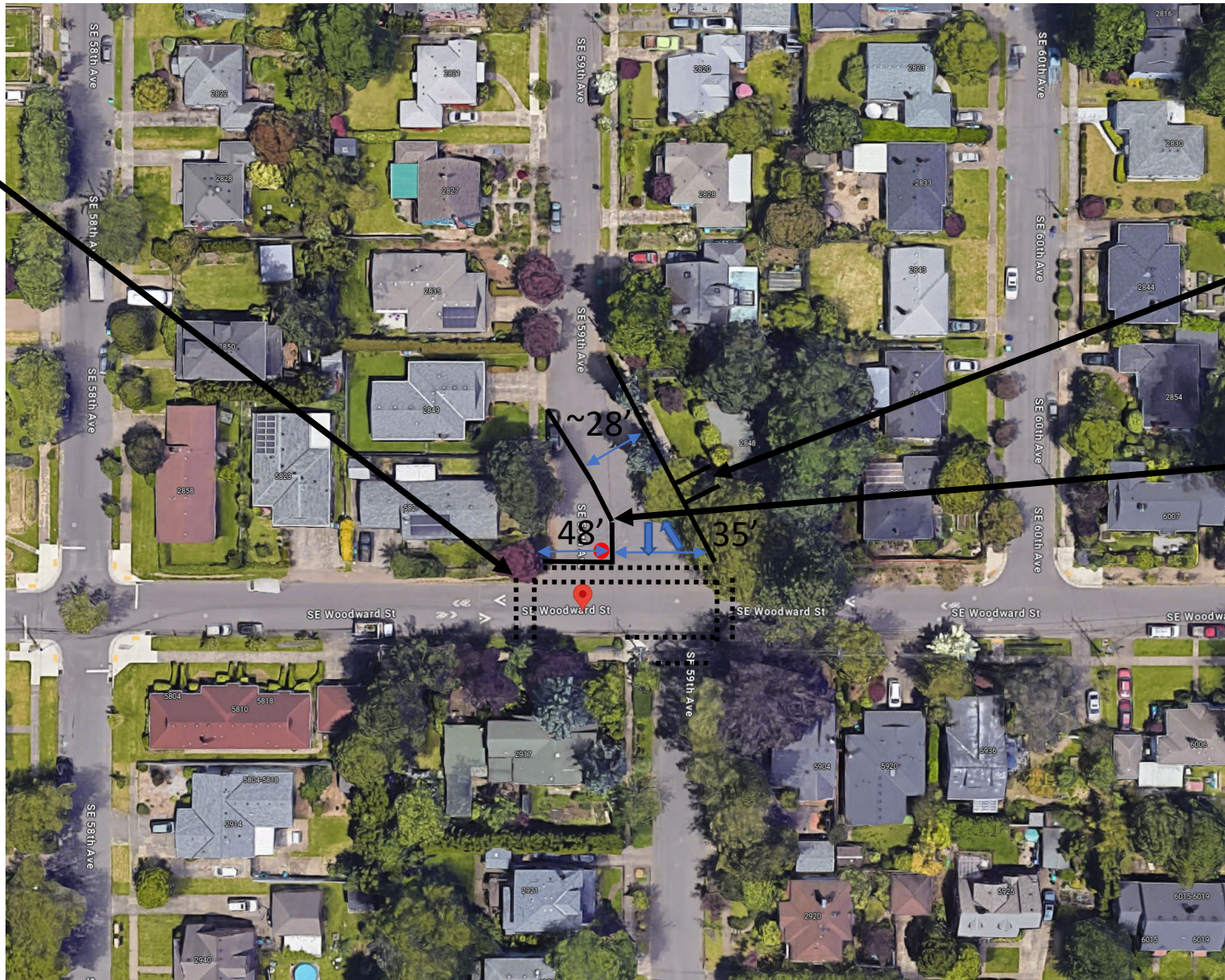
12" Traffic Separators

↔ Path of Travel = Veh

⋯ Path of Travel = Ped

Option 3

Unimproved Sidewalk w/
curb cut



Do Not Enter Signs

Space island away from driveway to allow ingress/egress

12" Traffic Separators

↔ Path of Travel = Veh

⋯ Path of Travel = Ped

● STOP Sign

Questions for Community

- What are the access needs for 59th crossing Woodward?
- For option 2, is the fronting resident ok with NB one-way?
- For option 1, is the fronting resident ok with making a sweeping turn into their driveway?
- What will the community do with the open space
 - Option 1 and 3 create large areas adjacent to curb. Is there concern about how this space will be used and maintained?
 - Option 2 creates a large area in the middle of the intersection.

[Project Webpage](#)

Direct contact: Scott Cohen, Capital Project Manager

scott.cohen@portlandoregon.gov | 503-823-5345